

237 Fairmile Road
Christchurch
Dorset
BH23 2LQ

01202 487587

MICHAEL ADAM

post@michaeladam.co.uk

www.michaeladam.co.uk



These particulars are intended to give a fair description of the property, but their accuracy is not guaranteed and they do not constitute an offer or contract.

DRAFT DETAILS – AWAITING VERIFICATION FROM VENDOR

**14 WILTON CLOSE
CHRISTCHURCH
BH23 2PL**

Offers Over £550,000

Freehold



SITUATED ON A GOOD SIZED PLOT WITH LARGE REAR GARDEN IS THIS WELL PRESENTED 3-4 BEDROOM DETACHED CHALET STYLE PROPERTY.

OFFERING SPACIOUS ACCOMMODATION THROUGHOUT WHICH INCLUDES ENTRANCE VESTIBULE, ENTRANCE HALL, LARGE LOUNGE, BREAKFAST KITCHEN, GROUND FLOOR SHOWER ROOM, 2 DOUBLE BEDROOMS TO THE GROUND FLOOR AND THEN TO THE FIRST FLOOR

IS A 4 PIECE BATHROOM WITH CORNER JACUZZI BATH AND WALK IN SHOWER, THEN A LARGE MASTER BEDROOM WITH BUILT IN WARDROBES. THIS ROOM IS OF A SIZE THAT COULD EASILY BE DIVIDED TO CREATE 2 FIRST FLOOR BEDROOMS.

BENEFITS CONVEYED WITH THE PROPERTY INCLUDE AMPLE OFF ROAD PARKING, DETACHED GARAGE, DOUBLE GLAZING AND GAS FIRED CENTRAL HEATING, LARGE GARDEN, BEING SITUATED IN A CUL-DE-SAC LOCATION AND THE ADDED BENEFIT OF BEING OFFERED FOR SALE WITH NO FORWARD CHAIN.

14 WILTON CLOSE, CHRISTCHURCH BH23 2PL

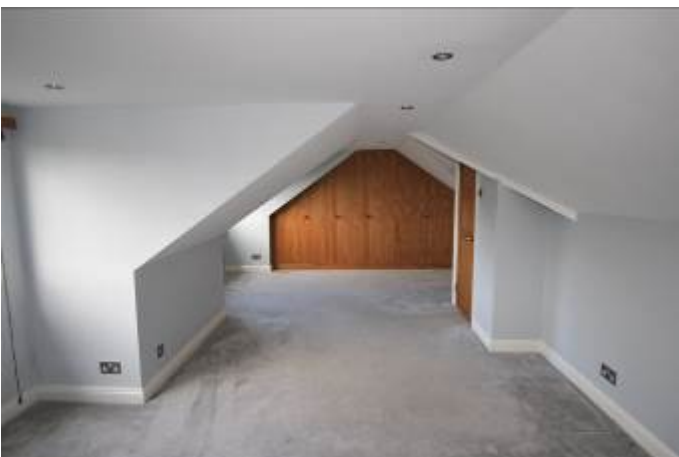
- **DETACHED CHALET**
- **DECEPTIVELY SPACIOUS THROUGHOUT**
- **AMPLE OFF ROAD PARKING AND GARAGE**
- **NO FORWARD CHAIN**
- **3 DOUBLE BEDROOMS**
- **LARGE LOUNGE**
- **MODERN SHOWER ROOM AND BATHROOM**
- **MODERN KITCHEN WITH FITTED APPLIANCES**
- **POPULAR LOCATION**
- **TWYNHAM CATCHMENT**
- **DOUBLE GLAZING**
- **GAS FIRED CENTRAL HEATING**
- **ATTRACTIVE PARQUET FLOORING**
- **COULD EASILY BE MADE INTO 4 BEDROOMS**
- **VIEWING ADVISED**



VIEWING STRICTLY BY APPOINTMENT PLEASE

Please note that the equipment, fittings, fireplaces, heating systems, mains services, apparatus and appliances have not been tested by us the agents so we cannot confirm that they are in working order. All measurements are approximate and are for guidance only.

14 WILTON CLOSE, CHRISTCHURCH BH23 2PL



14 WILTON CLOSE, CHRISTCHURCH BH23 2PL



14 WILTON CLOSE, CHRISTCHURCH BH23 2PL

Ground Floor

Approx. 85.0 sq. metres (914.8 sq. feet)



First Floor

Approx. 41.1 sq. metres (442.8 sq. feet)

